

ALLYONE ENVIRONMENTAL TECHNOLOGIES INDIA PVT LTD
CORPORATE OFFICE

B-239, MIDC Malegaon, Sinnar, Dist. Nasik, Maharashtra - 422113 (INDIA)



• ACCURACY

• DURABILITY

• PERFORMANCE

BUSINESS ENQUIRIES

INDIA

sales@allyone.co.in
+91 87678 04700

sales.co@allyone.co.in
+91 8767804711

EXPORTS

export@allyone.co.in
+91 8767804701

SERVICE SUPPORT

service@allyone.co.in
+91 8767804733

service.co@allyone.co.in
+91 8767804736

service.asst@allyone.co.in
+91 8767804734

CHANNEL PARTNERS

Andhra Pradesh and Telangana

ELEM TECHNOLOGIES
+91 09866554431
elem270571@gmail.com

Nepal

TRADE TIME INTERNATIONAL
+977 9802933160
trade33160@gmail.com

Bangladesh

JABS PHARMATECH
+880 01715572988 / 01935572988
mdjaved800@gmail.com
sales@jabspharmatech.com

Jordan

SAMA SUPPLIES
+962 777386372
hamidodeh@samasupplies.com

MISSION

To earn the satisfaction, appreciation and loyalty of our esteemed customers by providing them the best products and services, assisting and enabling them in achieving a final product of the highest quality.

VISION

To be the foremost brand in the field of controlled environmental testing/measuring technologies and solutions.



OBJECTIVE

To foresee professional change and accordingly adapt, equip and excel in performing to produce and provide the latest in stability solutions, maximising our market reach with consistent growth.



DEVIPRASAD BIJAY PATRA
FOUNDER-DIRECTOR

25+ Years of rich, in depth & holistic experience in the field of environmental testing in critical industries like Pharmaceuticals

The “Brand” is not what we tell our clients what it is, but in fact it’s what the clients tell each other about it!

At Allyone, we strive to live up to our esteemed client’s expectations with our determined team of subject matter expert professionals, State of the art Infrastructure & unwavering, laser sharp focus on each activity we perform so as to produce a world class product delivering top notch performance, complemented by an assurance of prompt after sales service, thus creating an ecosystem of seamless, trouble free, futureproof experience.

The all-encompassing growth Allyone has demonstrated over a decade speaks volumes about our commitment for excellence.

With our meticulously drafted Vision, Mission & Quality Policy guiding us to grow even higher, deeper & wider in our chosen field!

The world is our stage & we believe that we’ve just begun marching towards the top spot!! See you at the summit!!

WHY ALLYONE?

Our strengths that have enabled us to carve a niche in the global market are :

- Innovative products
- Customization
- Committed service

CLIENT SATISFACTION

We are blessed to have been serving a considerable number of satisfied customers over these years, who have imparted their trust and support through humble gestures of appreciations towards our products and services. These appreciations have motivated us to aim towards achieving maximum customer satisfaction by coordinating all activities systematically, ensuring timely output schedules and prompt service.

OUR GLOBAL PRESENCE



India - Installation Locations

- Baddi • Dehradun • Roorkee • Haridwar • Sikkim • Delhi • Indore • Ratlam • Ahmedabad • Surat
- Vadodara • Vapi • Ankaleshwar • Dahej • Hyderabad • Vishakhapatnam • Vijayawada • Aurangabad
- Mumbai • Raigad • Nasik • Pune • Goa • Bengaluru • Chennai • Pondicherry • Coimbatore



UNIT 1



UNIT 2

ALLYONE is a dream lived to complete realization. With a moderate beginning it has soared higher in motivation, inspiration and ideals. With a total built-up area of 42,000 sq. ft., our 3 units are dedicated for Assembly & Testing, and complete Fabrication. Being located in the resourceful Industrial area of Sinnar, Nasik. We have a Strong professional family of over 150+ employee.

ALLYONE manufactures Environmental Testing Equipment for various Industries like Pharmaceutical, Chemical, Cosmetic, Food Products and Bulk Drug.

Today a state of art Facility at MIDC, Sinnar, Nasik incorporating the office and industry stands proudly.

The company is managed by a team of qualified personnel with extensive knowledge and experience in the field that reflects in company values and ethics.

ALLYONE's philosophy is to guarantee excellent products and provide reliable service. Hence detailed attention is paid in order to achieve efficient product customization and optimization as per requirement. Ascertaining the strong reputation, it has, it makes sure under ICH & FDA guidelines.

ALLYONE's repeat business is the true mark of customer satisfaction and product quality.



UNIT 3

OUR PRODUCTS

WALK-IN CHAMBER



STABILITY / HUMIDITY CHAMBER SPECIFICATION

Temperature Range : 20°C to 60°C
 Accuracy : $\leq \pm 0.2^\circ\text{C}$
 Uniformity : $\leq \pm 1^\circ\text{C}$
 Humidity Range : 40% RH to 90% RH
 Accuracy : $\leq \pm 1\%$ RH
 Uniformity : $\leq \pm 3\%$ RH

Chamber Suitable Conditions:

25°C/60% RH, 30°C/65%RH, 30°C/75% RH, 40°C/75%RH
 Low Humidity Chambers are available for conditions of
 25°C/40% RH, 30°C/35%RH, 40°C/25% RH

Customised Chamber
 Freeze Thaw Chamber / Cyclic Chamber
 Capsule Drying Chamber

COLD CHAMBER / COOLING CABINET SPECIFICATION

Temperature Range : 2°C to 8°C
 Accuracy : $\leq \pm 1^\circ\text{C}$
 Uniformity : $\leq \pm 2^\circ\text{C}$



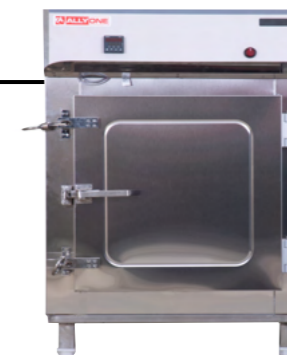
HIGH CAPACITY STAND ALONE CHAMBER

PHOTOSTABILITY CHAMBER SPECIFICATION

Temperature Range : 20°C to 50°C
 Accuracy : $\leq \pm 0.2^\circ\text{C}$
 Uniformity : $\leq \pm 1^\circ\text{C}^*$
 Humidity Range : 40% RH to 85% RH
 Accuracy : $\leq \pm 1\%$
 Uniformity : $\leq \pm 3\%^*$



STAND ALONE CHAMBER



LOD/GLASSWARE DRYING/ HOT AIR/LAB OVEN SPECIFICATION

Temperature Range : 50°C to 300°C
 Accuracy : $\leq \pm 0.5^\circ\text{C}$
 Uniformity : $\leq \pm 3.0^\circ\text{C}^*$

MUFFLE FURNACE SPECIFICATION

Temperature Range : 300°C to 1100°C
 Accuracy : $\leq \pm 1.0^\circ\text{C}$

VACUUM OVEN SPECIFICATION

Temperature Range : 50°C to 200°C
 Accuracy : $\leq \pm 0.5^\circ\text{C}$



PLC/PID
 BASED

DEEP FREEZER SPECIFICATION

Temperature Range : -10°C to -30°C
 Accuracy : $\leq \pm 3^\circ\text{C}$
 Uniformity : $\leq \pm 5^\circ\text{C}^*$

INCUBATOR (Heating) SPECIFICATION

Temperature Range : 10°C above ambient temperature to 60°C
 Accuracy : $\leq \pm 0.2^\circ\text{C}$
 Uniformity : $\leq \pm 1^\circ\text{C}$

INCUBATOR (Cooling & Heating) SPECIFICATION

Temperature Range : 20°C to 60°C
 Accuracy : $\leq \pm 0.2^\circ\text{C}$
 Uniformity : $\leq \pm 1^\circ\text{C}$



STAND ALONE CHAMBER



DUAL CHAMBER

PLC
 BASED

WALK-IN CHAMBER



“QUALITY MEANS DOING IT RIGHT WHEN NO ONE IS LOOKING.”

WALK-IN STABILITY / HUMIDITY CHAMBER

Technical Specifications

Temperature	Range : 20°C to 60°C	Accuracy : $\leq \pm 0.2^\circ\text{C}$	Uniformity : $\leq \pm 1.0^\circ\text{C}^*$
Rel. Humidity	Range : 40%RH to 90%RH	Accuracy : $\leq \pm 1.0\%$	Uniformity : $\leq \pm 3.0\%^*$

Standard equipment operating conditions :

- 25°C / 60%RH • 30°C / 65%RH • 30°C / 75%RH • 40°C / 75%RH

Low Humidity equipment operating conditions :

- 25°C / 40%RH • 30°C / 35%RH • 40°C / 25%RH

Models	Cap. in litres	Internal size in mm	External size in mm	Rack Qty.	Tray Qty.	Tray size in mm	Connected Load
AO/WSC-400	4000	2000WX1000DX2000H	2160WX1630DX2200H	2	10	730WX625DX30H	4.0 KW
AO/WSC-600	6000	2000WX1500DX2000H	2160WX2130DX2200H	4	20	600WX625DX30H	4.25 KW
AO/WSC-800	8000	2000WX2000DX2000H	2160WX2630DX2200H	4	20	850WX625DX30H	4.25 KW
AO/WSC-1000	10000	2000WX2500DX2000H	2160WX3130DX2200H	6	30	720WX625DX30H	4.25 KW
AO/WSC-1200	12000	2000WX3000DX2000H	2160WX3630DX2200H	6	30	885WX625DX30H	4.25 KW
AO/WSC-1600	16000	2000WX4000DX2000H	2160WX4630DX2200H	8	40	905WX625DX30H	5.5 KW
AO/WSC-2000	20000	2000WX4000DX2500H	2160WX4630DX2700H	8	48	905WX625DX30H	6.0 KW
AO/WSC-2500	25000	2300WX4500DX2500H	2460WX5130DX2700H	10	60	815WX750DX30H	6.0 KW
AO/WSC-3000	30000	4000WX3000DX2500H	4160WX3630DX2700H	12	72	885WX625DX30H	9.0 KW
AO/WSC-4000	40000	4000WX4000DX2500H	4160WX4630DX2700H	16	96	905WX625DX30H	9.0 KW
AO/WSC-5000	50000	4500WX4500DX2500H	4660WX5130DX2700H	20	120	815WX725DX30H	12.75 KW

WALK-IN INCUBATOR (COOLING & HEATING)

Technical Specifications

Temperature	Range : 20°C to 60°C	Accuracy : $\leq \pm 0.2^\circ\text{C}$	Uniformity : $\leq \pm 1.0^\circ\text{C}^*$
--------------------	----------------------	---	---

Models	Cap. in litres	Internal size in mm	External size in mm	Rack Qty.	Tray Qty.	Tray size in mm	Connected Load
AO/WI-400	4000	2000WX1000DX2000H	2160WX1630DX2200H	2	10	730WX625DX30H	2.5 KW
AO/WI-600	6000	2000WX1500DX2000H	2160WX2130DX2200H	4	20	600WX625DX30H	2.75 KW
AO/WI-800	8000	2000WX2000DX2000H	2160WX2630DX2200H	4	20	850WX625DX30H	2.75 KW
AO/WI-1000	10000	2000WX2500DX2000H	2160WX3130DX2200H	6	30	720WX625DX30H	2.75 KW
AO/WI-1200	12000	2000WX3000DX2000H	2160WX3630DX2200H	6	30	885WX625DX30H	2.75 KW
AO/WI-1600	16000	2000WX4000DX2000H	2160WX4630DX2200H	8	40	905WX625DX30H	3.5 KW
AO/WI-2000	20000	2000WX4000DX2500H	2160WX4630DX2700H	8	48	905WX625DX30H	4.0 KW
AO/WI-2500	25000	2300WX4500DX2500H	2460WX5130DX2700H	10	60	815WX750DX30H	4.0 KW
AO/WI-3000	30000	4000WX3000DX2500H	4160WX3630DX2700H	12	72	885WX625DX30H	5.0 KW
AO/WI-4000	40000	4000WX4000DX2500H	4160WX4630DX2700H	16	96	905WX625DX30H	5.0 KW
AO/WI-5000	50000	4500WX4500DX2500H	4660WX5130DX2700H	20	120	815WX725DX30H	6.75 KW

WALK-IN COLD CHAMBER / COOLING CABINET

Technical Specifications

Temperature	Range : 2°C to 8°C	Accuracy : $\leq \pm 1.0^\circ\text{C}$	Uniformity : $\leq \pm 2.0^\circ\text{C}^*$
--------------------	--------------------	---	---

Models	Cap. in litres	Internal size in mm	External size in mm	Rack Qty.	Tray Qty.	Tray size in mm	Connected Load
AO/WCC-400	4000	2000WX1000DX2000H	2160WX1490DX2200H	2	10	730WX625DX30H	2.05 KW
AO/WCC-600	6000	2000WX1500DX2000H	2160WX1990DX2200H	4	20	600WX625DX30H	2.05 KW
AO/WCC-800	8000	2000WX2000DX2000H	2160WX2490DX2200H	4	20	850WX625DX30H	2.75 KW
AO/WCC-1000	10000	2000WX2500DX2000H	2160WX2990DX2200H	6	30	720WX625DX30H	2.75 KW
AO/WCC-1200	12000	2000WX3000DX2000H	2160WX3490DX2200H	6	30	885WX625DX30H	3.75 KW
AO/WCC-1600	16000	2000WX4000DX2000H	2160WX4490DX2200H	8	40	905WX625DX30H	4.95 KW
AO/WCC-2000	20000	2000WX4000DX2500H	2160WX4490DX2700H	8	48	905WX625DX30H	5.95 KW
AO/WCC-2500	25000	2300WX4500DX2500H	2460WX4990DX2700H	10	60	815WX750DX30H	5.95 KW
AO/WCC-3000	30000	4000WX3000DX2500H	4160WX3490DX2700H	12	72	885WX625DX30H	6.75 KW
AO/WCC-4000	40000	4000WX4000DX2500H	4160WX4490DX2700H	16	96	905WX625DX30H	6.75 KW
AO/WCC-5000	50000	4500WX4500DX2500H	4660WX4990DX2700H	20	120	815WX725DX30H	6.75 KW

* Measured with high accuracy data-logger at sample storage area with standard Set Point.
 • Custom built Chambers are available in any dimensions and capacities

HIGH CAPACITY STAND ALONE CHAMBER



“QUALITY IS NOT AN ACT, IT IS A HABIT.”

STABILITY CHAMBER / HUMIDITY CHAMBER

Technical Specifications

Temperature	Range : 20°C to 60°C	Accuracy : $\pm 0.2^\circ\text{C}$	Uniformity : $\pm 1.0^\circ\text{C}^*$
Rel. Humidity	Range : 40%RH to 90%RH	Accuracy : $\pm 1.0\%$	Uniformity : $\pm 3.0\%^*$

Standard equipment operating conditions :

- 25°C / 60%RH • 30°C / 65%RH • 30°C / 75%RH • 40°C / 75%RH

Low Humidity equipment operating conditions :

- 25°C / 40%RH • 30°C / 35%RH • 40°C / 25%RH

Models	Cap. in litres	Internal size in mm	External size in mm	Tray Qty.	Tray size in mm	Connected Load
AO/SC-150	1500	1600WX600DX1700H	1760WX1210DX2060H	8	660WX580DX30H	4.0 KW
AO/SC-200	2000	1600WX750DX1700H	1760WX1360DX2060H	8	660WX730DX30H	4.0 KW
AO/SC-250	2500	2400WX600DX1700H	2560WX1210DX2060H	12	635WX580DX30H	4.0 KW
AO/SC-300	3000	2400WX750DX1700H	2560WX1360DX2060H	12	635WX730DX30H	4.0 KW

INCUBATOR (COOLING & HEATING)

Technical Specifications

Temperature	Range : 20°C to 60°C	Accuracy : $\pm 0.2^\circ\text{C}$	Uniformity : $\pm 1.0^\circ\text{C}^*$
--------------------	----------------------	------------------------------------	--

Models	Cap. in litres	Internal size in mm	External size in mm	Tray Qty.	Tray size in mm	Connected Load
AO/I-150	1500	1600WX600DX1700H	1760WX1210DX2060H	8	660WX580DX30H	2.5 KW
AO/I-200	2000	1600WX750DX1700H	1760WX1360DX2060H	8	660WX730DX30H	2.5 KW
AO/I-250	2500	2400WX600DX1700H	2560WX1210DX2060H	12	635WX580DX30H	2.5 KW
AO/I-300	3000	2400WX750DX1700H	2560WX1360DX2060H	12	635WX730DX30H	2.5 KW

COLD CHAMBER / COOLING CABINET

Technical Specifications

Temperature	Range : 2°C to 8°C	Accuracy : $\pm 1.0^\circ\text{C}$	Uniformity : $\pm 2.0^\circ\text{C}^*$
--------------------	--------------------	------------------------------------	--

Models	Cap. in litres	Internal size in mm	External size in mm	Tray Qty.	Tray size in mm	Connected Load
AO/CC-150	1500	1600WX600DX1700H	1760WX1160DX2060H	8	660WX580DX30H	1.95 KW
AO/CC-200	2000	1600WX750DX1700H	1760WX1310DX2060H	8	660WX730DX30H	1.95 KW
AO/CC-250	2500	2400WX600DX1700H	2560WX1160DX2060H	12	635WX580DX30H	1.95 KW
AO/CC-300	3000	2400WX750DX1700H	2560WX1310DX2060H	12	635WX730DX30H	1.95 KW

* Measured with high accuracy data-logger at sample storage area with standard Set Point.

WALK-IN CHAMBER FEATURES AND PROVISIONS

“COMMIT LESS DELIVER MORE.”



Construction

- 80 mm PUF Insulation density of 40 Kg/m³ with both side SS304 sheet of 0.6 mm thickness duly tested & certified.
- Tongue and Groove type Interlocks for Panels used in construction of Walk-In and High Capacity Stand Alone Chambers.
- Heavy Duty insulated Floor Panel with anti skid carpet for secured movement.



Sample Storage

- Racks - secured with strong joints internally to the chamber walls, made of heavy duty SS304 frame.
- Trays - Heavy Duty Perforated type, with special CNC punched perforations specially designed to maximize circulation aiding the constant uniformity in the chamber. The trays are secured with additional underside support rails to prevent flexing and warping after prolonged usage.

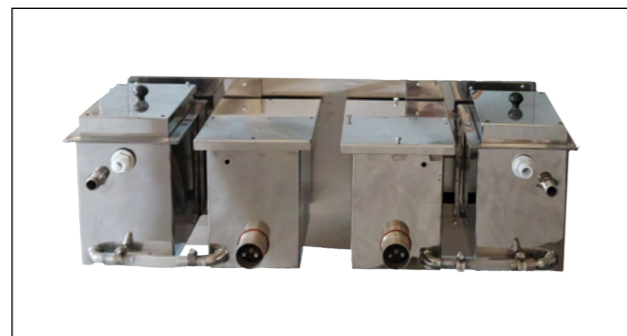


Door

- Heavy Duty Insulated Door with Full View Double layered Toughened Glass for viewing sample with good visibility.



Split Type Refrigeration System



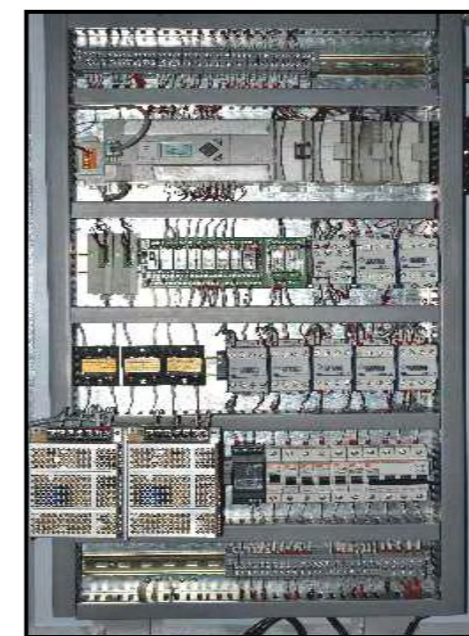
Humidification System



Annunciator / Hooter



Delta Control Panel



Allen-Bradley Control Panel

Control System

- Ergonomically designed Control Panel wiring with systematic sequential ferrule printing for input and output to all components like PLC, Contactors, Isolators, MCBs SSRs. easy maintenance made possible with the aide of easy to understand wiring diagrams.
- Advanced PLC program with built-in processor based Auto-Tuning to achieve and maintain constant Uniformity of set condition.
- 4.3" HMI provided with adequate local data storage and a Colour TFT/LCD Display with accurate representation of operating condition in contrasting colours for easy readability from a considerable distance.

- Built-In redundancy and safe guards to protect sensitive components from voltage surges.
- Advanced high accuracy transmitter sensors for temperature and humidity with output of 4 to 20 mA. Dedicated voltage and surge protection for sensors.

Temperature Control

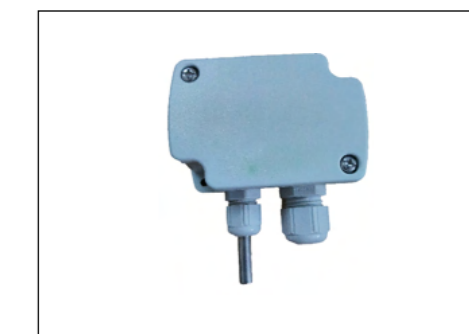
- Efficient, simplistic and a functionally proven design of refrigeration system using Emerson-Copeland compressors with built-in redundancy with PLC based auto-change over during intermittent power outages or component failure.
- 'U' shaped SS Air Heater Banks controlled by PLC to achieve & chamber internal air temperature
- Unique Chiller system provided with Walk-In Stability Chambers involve circulation of Chilled water through the evaporator coil providing longer sustenance of conditions during intermittent & accidental power outages.

Humidity Control

- In-house manufactured SS Reservoirs and Steam Kettles provided in the Humidification system to provide optimum humidity requirements for various conditions.
- Thermostat for safety measures dedicated to all Chamber high temperature, Steam Kettle Heater Element and Utility High Temperature and resulting Longer Component Life.



Transmitter Temperature & Humidity



Transmitter Temperature

STAND ALONE CHAMBER



STANDARD FEATURES

Construction

Double wall inner tank and outer body is dynamically designed. The equipment interior and exterior is constructed with SS304 grade finish-4.

Tray

Heavy duty perforated type, with special CNC punched perforations for efficient circulation, with intervals of ½" height adjustment for better sample storage.

Door

Heavy duty outer insulated door installed with imported hinges and lock for easy operation and inner glass door with latch to view samples without disturbing the set condition.

Optional Backup System

Equipment is installed with PLC based auto change over backup system for Refrigeration system and Humidification system.

PLC based Control System

- Controlling System- PLC
- 4.3" HMI with TFT LED Color Touch Screen

STABILITY / HUMIDITY CHAMBER

Technical Specifications

Temperature	Range : 20°C to 60°C	Accuracy : $\leq \pm 0.2^\circ\text{C}$	Uniformity : $\leq \pm 1^\circ\text{C}^*$
Rel. Humidity	Range : 40%RH to 90%RH	Accuracy : $\leq \pm 1.0\%$	Uniformity : $\leq \pm 3.0\%^*$

- Standard equipment operating conditions :**
 • 25°C / 60%RH • 30°C / 65%RH • 30°C / 75%RH • 40°C / 75%RH
Low Humidity equipment operating conditions :
 • 25°C / 40%RH • 30°C / 35%RH • 40°C / 25%RH

INCUBATOR (COOLING & HEATING)

Technical Specifications

Temperature	Range : 20°C to 60°C	Accuracy : $\leq \pm 0.2^\circ\text{C}$	Uniformity : $\leq \pm 1.0^\circ\text{C}^*$
-------------	----------------------	---	---

INCUBATOR (HEATING)

Technical Specifications

Temperature	Range : 10°C above ambient to 60°C	Accuracy : $\leq \pm 0.2^\circ\text{C}$	Uniformity : $\leq \pm 1.0^\circ\text{C}^*$
-------------	------------------------------------	---	---

COLD CHAMBER / COOLING CABINET

Technical Specifications

Temperature	Range : 2°C to 8°C	Accuracy : $\leq \pm 1.0^\circ\text{C}$	Uniformity : $\leq \pm 2.0^\circ\text{C}^*$
-------------	--------------------	---	---

“QUALITY, SERVICE, CLEANLINESS, AND VALUE.”

Models litres	Cap. in	Internal size in mm	External size in mm	Tray Qty.	Tray size in mm	Connected Load
AO/SC-15	150	500Wx400Dx750H	625Wx1050Dx1350H	2	405Wx400Dx30H	2.25 KW
AO/SC-25	250	700Wx400Dx900H	825Wx1050Dx1500H	2	605Wx400Dx30H	2.25 KW
AO/SC-40	400	700Wx500Dx1150H	825Wx1150Dx1750H	3	605Wx500Dx30H	2.25 KW
AO/SC-50	500	700Wx600Dx1200H	825Wx1250Dx1800H	3	605Wx600Dx30H	2.25 KW
AO/SC-60	600	700Wx600Dx1450H	825Wx1250Dx2050H	3	605Wx600Dx30H	2.25 KW
AO/SC-80	800	700Wx800Dx1450H	825Wx1450Dx2050H	4	605Wx800Dx30H	2.5 KW
AO/SC-100	1000	830Wx830Dx1450H	955Wx1480Dx2050H	4	735Wx830Dx30H	2.5 KW

Models litres	Cap. in	Internal size in mm	External size in mm	Tray Qty.	Tray size in mm	Connected Load
AO/I-15	150	500Wx400Dx750H	625Wx860Dx1350H	2	405Wx400Dx30H	1.25 KW
AO/I-25	250	700Wx400Dx900H	825Wx860Dx1500H	2	605Wx400Dx30H	1.25 KW
AO/I-40	400	700Wx500Dx1150H	825Wx960Dx1750H	3	605Wx500Dx30H	1.25 KW
AO/I-50	500	700Wx600Dx1200H	825Wx1060Dx1800H	3	605Wx600Dx30H	1.25 KW
AO/I-60	600	700Wx600Dx1450H	825Wx1060Dx2050H	3	605Wx600Dx30H	1.25 KW
AO/I-80	800	700Wx800Dx1450H	825Wx1260Dx2050H	4	605Wx800Dx30H	1.5 KW
AO/I-100	1000	830Wx830Dx1450H	955Wx1290Dx2050H	4	735Wx830Dx30H	1.5 KW

Models litres	Cap. in	Internal size in mm	External size in mm	Tray Qty.	Tray size in mm	Connected Load
AO/I-15	150	500Wx400Dx750H	625Wx860Dx1350H	2	405Wx400Dx30H	0.75 KW
AO/I-25	250	700Wx400Dx900H	825Wx860Dx1500H	2	605Wx400Dx30H	0.75KW
AO/I-40	400	700Wx500Dx1150H	825Wx960Dx1750H	3	605Wx500Dx30H	0.75 KW
AO/I-50	500	700Wx600Dx1200H	825Wx1060Dx1800H	3	605Wx600Dx30H	0.75 KW
AO/I-60	600	700Wx600Dx1450H	825Wx1060Dx2050H	3	605Wx600Dx30H	0.75 KW
AO/I-80	800	700Wx800Dx1450H	825Wx1260Dx2050H	4	605Wx800Dx30H	1 KW
AO/I-100	1000	830Wx830Dx1450H	955Wx1290Dx2050H	4	735Wx830Dx30H	1 KW

Models litres	Cap. in	Internal size in mm	External size in mm	Tray Qty.	Tray size in mm	Connected Load
AO/CC-15	150	500Wx400Dx750H	625Wx860Dx1350H	2	405Wx400Dx30H	0.75 KW
AO/CC-25	250	700Wx400Dx900H	825Wx860Dx1500H	2	605Wx400Dx30H	0.75 KW
AO/CC-40	400	700Wx500Dx1150H	825Wx960Dx1750H	3	605Wx500Dx30H	0.75 KW
AO/CC-50	500	700Wx600Dx1200H	825Wx1060Dx1800H	3	605Wx600Dx30H	0.75 KW
AO/CC-60	600	700Wx600Dx1450H	825Wx1060Dx2050H	3	605Wx600Dx30H	0.75 KW
AO/CC-80	800	700Wx800Dx1450H	825Wx1260Dx2050H	4	605Wx800Dx30H	1 KW
AO/CC-100	1000	830Wx830Dx1450H	955Wx1290Dx2050H	4	735Wx830Dx30H	1 KW

* Measured with high accuracy data-logger at sample storage area with standard Set Point.

PHARMA REFRIGERATOR / DUAL CHAMBER



DUAL CHAMBER

Technical Specifications

UPPER COMPARTMENT - DEEP FREEZER

Temperature	Range : -10°C to -30°C	Accuracy : ≤ ± 3.0°C	Uniformity : ≤ ± 5.0°C*
--------------------	------------------------	----------------------	-------------------------

LOWER COMPARTMENT - COLD CHAMBER

Technical Specifications

Temperature	Range : 2°C to 8°C	Accuracy : ≤ ± 1.0°C	Uniformity : ≤ ± 2.0°C*
--------------------	--------------------	----------------------	-------------------------

Construction

The Equipment interior is constructed with SS304 grade matt finish and exterior is constructed with SS304 grade finish-4.

Refrigeration System

Set of energy efficient Copeland compressor, static type evaporator (Ice formation type)

Tray

Stainless steel perforated tray with intervals of ½" height adjustment for better sample storage.

Door

Heavy duty PUF insulated projected door installed with imported hinges and lock for easy operation.

PLC based control system

- 4.3" HMI with TFT LCD Colour touch screen
- Communication via Ethernet
- PLC Based Safety cut off
- Passcode protected door operation
- PT 100 transmitter based sensors

Models	Internal size in mm	External size in mm	Tray Qty.	Tray size in mm	Connected Load
AO/DC	620Wx600Dx350H	825Wx1085Dx1760H	1	540Wx600Dx30H	0.75 KW
100 LTR+200 LTR	620Wx600Dx600H		3	540Wx600Dx30H	0.75 KW

Dual Chamber also available as per customised or Make-to-Order dimensions and Requirements like Cold Chamber+Incubator, Incubator+Incubator, Stability + Stability.

DEEP FREEZER



DEEP FREEZER

Technical Specifications

Temperature	Range : -10°C to -30°C	Accuracy : ≤ ± 3.0°C	Uniformity : ≤ ± 5.0°C*
--------------------	------------------------	----------------------	-------------------------

Construction

The Equipment interior is constructed with SS304 grade matt finish and exterior is constructed with SS304 grade finish-4.

Refrigeration System

Set of energy efficient Copeland compressor, static type evaporator (Ice formation type)

Tray

Stainless steel perforated tray with intervals of ½" height adjustment for better sample storage.

Door

Heavy duty PUF insulated projected door installed with imported hinges and lock for easy operation.

PLC based control system

- 4.3" HMI with TFT LCD Colour touch screen
- Communication via Ethernet
- PLC Based Safety cut off
- Passcode protected door operation
- PT 100 transmitter based sensors

Models	Cap. in litres	Internal size in mm	External size in mm	Tray Qty.	Tray size in mm	Connected Load
AO/DF-15	150	520Wx500Dx600H	725Wx825Dx1285H	2	440Wx500Dx30H	0.75 KW
AO/DF-25	250	520Wx600Dx800H	725Wx925Dx1485H	2	440Wx600Dx30H	0.75 KW
AO/DF-40	400	620Wx650Dx1000H	825Wx975Dx1735H	3	540Wx650Dx30H	1 KW
AO/DF-50	500	620Wx650Dx1250H	825Wx975Dx1985H	3	540Wx650Dx30H	1 KW
AO/DF-60	600	720Wx575Dx1450H	925Wx900Dx2235H	4	640Wx575Dx30H	2.5 KW
AO/DF-80	800	720Wx775Dx1450H	925Wx1100Dx2235H	4	640WX775DX30H	2.5 KW

* Measured with high accuracy data-logger at sample storage area with standard Set Point.

PHOTOSTABILITY CHAMBER



STANDARD FEATURES

Technical Specifications

Temperature	Range : 20°C to 50°C	Accuracy : $\leq \pm 0.2^\circ\text{C}$	Uniformity : $\leq \pm 1.0^\circ\text{C}^*$
Rel. Humidity	Range : 40%RH to 85%RH	Accuracy : $\leq \pm 1\%RH$	Uniformity : $\leq \pm 3\%RH^*$

Construction

Double wall inner tank and outer body is dynamically designed for strength, ease of operation & safety. The Equipment interior is constructed with SS304 grade mirror finish and exterior is constructed with powder coated GI sheet/ SS304 grade finish-4.

Tray

Stainless steel perforated tray with intervals of 1/2" height adjustment for better sample storage.

Door

Heavy duty outer insulated door installed with imported hinges and lock for easy operation and inner glass door with latch to observe samples without disturbing the set condition.

UV & Fluorescent Lights

- As per ICH Guidelines-1.2 Million Lux hours of visible light and 200 watt Hr/m² of UV light. Auto Shut OFF after specified exposure time.
- Individual switch is provided to ON/OFF for UV & Fluorescent light.
- UV light is switched off automatically once inner glass door is opened to prevent hazardous exposure.
- Samples can be tested under Fluorescent light or U.V. lights separately.

PLC based control system

- 4.3" HMI with TFT LCD Colour touch screen
- Communication via Ethernet
- PLC Based Safety cut OFF
- Passcode protected door operation
- Imported best in its class high accuracy transmitter based sensors
- Individual UV & Lux data reports generated through data logger (Printing - Interface)

Models	Cap. in litres	Internal size in mm	External size in mm	Tray Qty.	Tray size in mm	Connected Load
AO/PSC-20	200	700Wx500Dx600H	915Wx1155Dx1670H	2	605Wx500Dx30H	3.4 KW

* Measured with high accuracy data-logger at sample storage area with standard Set Point.

OVEN



LOD/GLASSWARE DRYING/HOT AIR/LAB OVEN STANDARD FEATURES

Technical Specifications

Temperature	Range : 50°C to 300°C	Accuracy : $\leq \pm 0.5^\circ\text{C}$	Uniformity : $\leq \pm 3.0^\circ\text{C}^*$
--------------------	-----------------------	---	---

Construction

Double wall inner tank and outer body is dynamically designed. The Equipment interior is constructed with SS304 grade finish-4 and exterior is constructed with powder coated GI sheet/ SS304 grade finish-4.

Tray

Heavy duty perforated type, with special CNC punched perforations for efficient circulation, with intervals of 1/2" height adjustment for better sample storage.

Door

Heavy duty outer insulated door installed with imported hinges and lock for easy operation.

Control system

Controller-Equipped with advanced PID based control system installed with Contactor, MCB, PT-100 Sensors for operational accuracy and optimum performance. PID Make Fuji (Without Time Operation) / ZENEX (With Time Operation)

Models	Cap. in litres	Internal size in mm	External size in mm	Tray Qty.	Tray size in mm	Connected Load
AO/10	100	450Wx450Dx500H	655Wx1020Dx1070H	2	360Wx450Dx30H	1.75 KW
AO/20	200	600Wx600Dx600H	805Wx1170Dx1170H	3	510Wx600Dx30H	2.75 KW
AO/40	400	600Wx700Dx950H	805Wx1270Dx1520H	3	510Wx700Dx30H	4.25 KW

* Measured with high accuracy data-logger at sample storage area with standard Set Point.

WALK-IN FREEZER



STANDARD FEATURES

Technical Specifications

Temperature	Range : -10°C to -30°C	Accuracy : $\leq \pm 3.0^\circ\text{C}$	Uniformity : $\leq \pm 5.0^\circ\text{C}^*$
--------------------	------------------------	---	---

PRECOOLING ROOM

Internal size in mm	External size in mm	Rack Qty.	Tray Qty.	Tray size in mm	Connected Load
2080Wx1000Dx2080H	2240Wx2950Dx2300H	1	5	730Wx500Dx30H	2.05

FREEZER ROOM

Models	Cap. in litres	Internal size in mm	External size in mm	Rack Qty.	Tray Qty.	Tray size in mm	Connected Load
AO/WF	6000	2000Wx1530Dx200H	2240Wx2950Dx2300H	4	20	610Wx625Dx30H	5.0KW
AO/WF	8000	2000Wx2030Dx2000H	2240Wx3450Dx2300H	4	20	860Wx625Dx30H	5.0KW
AO/WF	10000	2000Wx2530Dx2000H	2240Wx3950Dx2300H	6	30	730Wx625Dx30H	6.0KW
AO/WF	12000	2000Wx3030Dx2000H	2240Wx4450Dx2300H	6	30	895Wx625Dx30H	6.0KW

Construction

The Equipment interior is constructed with SS304 grade finish-4 and exterior is constructed with SS304 grade finish-4.

Insulation

80 mm thick Rigid PU Foam with density of $40\text{kg/m}^3 \pm 2\text{ kgs}$ for Pre-Cooling (Ante Room)

120 mm thick Rigid PU Foam with density of $40\text{kg/m}^3 \pm 2\text{ kgs}$ for freezer room

Refrigeration

Set of energy efficient Copeland compressor

Tray

Stainless steel perforated tray with intervals of 6" height adjustment for better sample storage

Door

Heavy duty PUF insulated door installed with imported hinges and lock for easy operation

PLC based control system

- 4.3" HMI with TFT LCD Colour touch screen
- Communication via Ethernet
- PLC Based Safety cut off
- User defined Alphanumeric password protection
- Controlling sensor-PT100 transmitter type
- Individual controlling system for Pre-cooling (2°C to 8°C)&Freezer (-10°C to -30°C)
- Ceiling mounted indoor unit with PCGI MOC frost free type
- Auto Defrosting

“QUALITY IS REMEMBERED LONG AFTER THE PRICE IS FORGOTTEN.”



MUFFLE FURNACE

STANDARD FEATURES

Technical Specifications

Temperature	Range : 300°C to 1100°C	Accuracy : $\leq \pm 1.0^\circ\text{C}$
--------------------	-------------------------	---

Construction

Internal MOC having single piece of silimenite block. External MOC SS304 grade dynamically designed from strength point of view as well as working point of view with mirror finish.

Door

Front door with HFK bricks insulation.

Control system

Controller-Equipped with advanced PID based control system installed with Contactor, MCB, Sensors for operational accuracy and optimum performance K-type sensor, PID Make Fuji.

Models	Cap. in litres	Internal size in mm	Connected Load
AO/MF	6.75	150Wx300Dx150H	4.0 KW



VACUUM OVEN

STANDARD FEATURES

Technical Specifications

Temperature	Range : 50°C to 200°C	Accuracy : $\leq \pm 0.5^\circ\text{C}$
--------------------	-----------------------	---

Construction

Internal MOC SS304 grade with Mirror finish Outer MOC Outer body SS304 grade outer body is dynamically designed from strength point of view as well as working point of view.

Tray

SS304 Plain type.

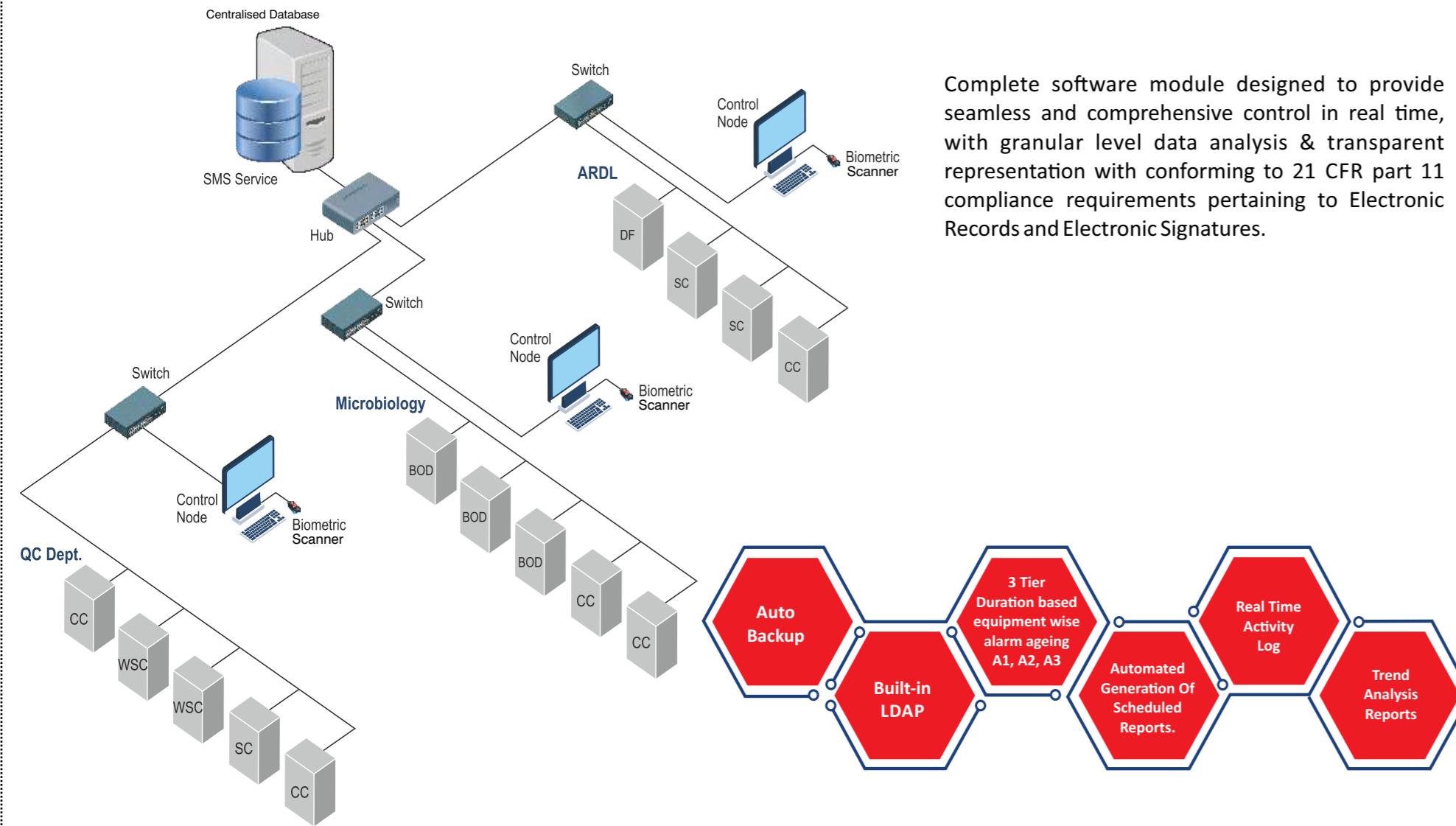
Door

Heavy duty door with Glass viewing window.

Control system

Controller-Equipped with advanced PID based control system installed with Contactor, MCB, Sensors for operational accuracy and optimum performance, PID Make Fuji, PT - 100 Sensor

Models	Cap. in litres	Internal size in mm	Tray Qty.	Connected Load
AO/VO	12	225 Diax300D	2	2 KW
AO/VO	21	300 Diax300D	2	2 KW



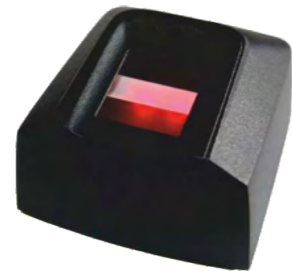
Complete software module designed to provide seamless and comprehensive control in real time, with granular level data analysis & transparent representation with conforming to 21 CFR part 11 compliance requirements pertaining to Electronic Records and Electronic Signatures.

SALIENT FEATURES

- Complete SCADA Architecture
- 64-bit architecture
- Microsoft Server OS & Windows desktop OS ready.
- Built-In LDAP/ MS-Active Directory Configuration-Selectable during initial installation. Built-in User based policies (Password Policies) will disable if LDAP/MS AD configuration is opted and executed.
- Browser based Interface- Single Login for accessing both Equipment Control and Report Generation as per User privileges.
- Privileges are assigned to User Groups on Functional, Reporting or combined basis. Centralised User Identity Management for Chamber operations. Single Database repository with all User and Equipment information including Biometric images in RAW format.
- All Chamber operations through Software- Through control node placed new Chamber locations. All data resides in main INTE-GRO Database. No data is stored on the control node. Secondary authentication is with Password and/or Biometric scanner.
- Door Operation with remark as per user privileges
- Event Acknowledgement
- Change Over Mode compressor, Humidifiers, Dehumidifiers
- User defined Calendarization of Compressor activity (daily/weekly/fortnightly/monthly)
- Safety Settings
- Data Logging Frequency (erstwhile known as Print Frequency)
- Condition Set Value change with Alarm Limits
- Equipment Configuration
- All operations captured in unified common Audit Trail-With User and Equipment wise Filters.
- Location/Department wise equipment access.
- Centralised (Server Based) Structured Database with configurable High Availability.
- Real time Alarm detection and ageing.
- 3 Tier Duration based equipment wise Alarm Ageing- A1, A2, A3
- Alarm duration recorded in real time and independent of Data Logging Frequency (Print Frequency)
- Frequency of Data Logging (print Frequency) automatically changes to every 1 minute during Alarm duration.
- Built In Auto & manual selectable backup with restore in separate instance
- Data Storage : 1500 lines at Equipment in case Connectivity is interrupted
- Backend- Microsoft SQL Database with selectable Backup.
- Tabular and Graphical Reports presentation
- Report Scheduling for automated generation of scheduled reports.
- 3 stage Reports Generation and verification process-Creator-Checker-Verifier. Export to pdf possible only after verifier verifies the report. All three electronic signatures appear in the footer of the report with User Name Date and Time stamp. Software is the creator of all auto scheduled reports.
- Reports at all stages reside in Report Log at all times. Status of the verification stage is indicated for all reports.
- PDF Reports can be secured using E-signatures.
- Company Logo and Information can be inserted in Reports- configured during initial installation.
- Privilege Based User & Group Creation
- Real Time Activity Log
- Trend Analysis based reports
- Separate reports for Alarms and Events
- 'Pencil' icon in Alarm and Event section of Software for acknowledgement
- Home screen provided to add remarks authenticated with password and/or Biometric Scanner. Once authenticated, 'Pencil Icon' disappears to prevent modifying previously entered Remark.
- Email & SMS Alerts
- MKT & MKRH Reports
- User ID and Password Policies as per compliance
- Configurable SMS and Email Alerts through software.
- Passcode protected door operation



Event & Alarm Alert SMS



Biometric / Finger Print Scanner

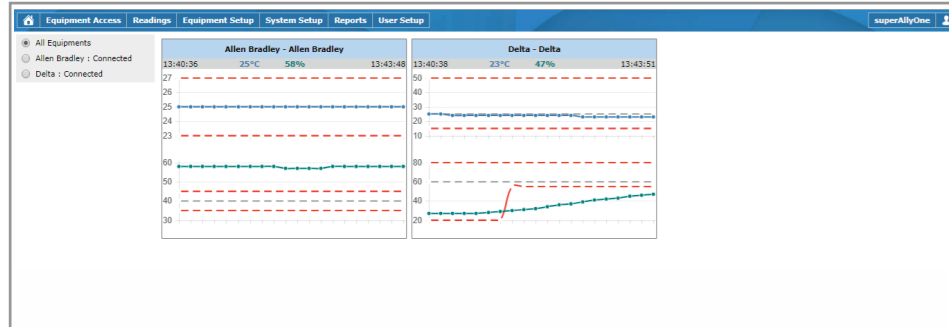
Agp Wiser Active Alarms

A1	A2	A3
0	0	11

Alarms - All Equipments

Equipment Name	Equipment ID	Type	Age	Start Date & Time	End Date & Time	Duration	Color Info	Alarm Occurred (Not Acknowledged)	Alarm Closed (Acknowledged)	Remarks
Allen Bradley	Allen Bradley	Monitoring Sensor- H7 Humidity High	A3	20-Oct-2018 13:28:12	20-Oct-2018 13:30:40	00:02:28	Red	superAllyOne		Due to Error
Allen Bradley	Allen Bradley	Monitoring Sensor- T7 Temp. Low	A3	20-Oct-2018 13:16:10	20-Oct-2018 13:16:10	00:00:00	Green			
Allen Bradley	Allen Bradley	Monitoring Sensor- T1 Temp. Low	A3	20-Oct-2018 13:29:38	20-Oct-2018 13:29:38	00:00:00	Green			
Allen Bradley	Allen Bradley	Monitoring Sensor- T4 Temp. Low	A3	20-Oct-2018 13:13:38	20-Oct-2018 13:13:38	00:00:00	Green			
Allen Bradley	Allen Bradley	Monitoring Sensor- T2 Temp. Low	A3	20-Oct-2018 13:11:12	20-Oct-2018 13:11:12	00:00:00	Green			
Allen Bradley	Allen Bradley	Monitoring Sensor- T5 Temp. Low	A3	20-Oct-2018 13:15:04	20-Oct-2018 13:20:22	00:05:18	Red			
Allen Bradley	Allen Bradley	Monitoring Sensor- T8 Temp. Low	A3	20-Oct-2018 13:28:48	20-Oct-2018 13:28:48	00:00:00	Green			
Allen Bradley	Allen Bradley	Monitoring Sensor- T6 Temp. Low	A3	20-Oct-2018 13:10:46	20-Oct-2018 13:21:10	00:10:24	Red			
Allen Bradley	Allen Bradley	Monitoring Sensor- H7 Humidity High	A3	20-Oct-2018 13:16:08	20-Oct-2018 13:26:14	00:10:06	Red			
Allen Bradley	Allen Bradley	Monitoring Sensor- H4 Humidity High	A3	20-Oct-2018 13:24:48	20-Oct-2018 13:24:48	00:00:00	Red			
Allen Bradley	Allen Bradley	Monitoring Sensor- H5 Humidity High	A3	20-Oct-2018 13:24:48	20-Oct-2018 13:24:48	00:00:00	Red			
Allen Bradley	Allen Bradley	Monitoring Sensor- H6 Humidity High	A3	20-Oct-2018 13:24:42	20-Oct-2018 13:24:42	00:00:00	Red			
Allen Bradley	Allen Bradley	Monitoring Sensor- H8 Humidity High	A3	20-Oct-2018 13:24:42	20-Oct-2018 13:24:42	00:00:00	Red			
Allen Bradley	Allen Bradley	Monitoring Sensor- H9 Humidity High	A3	20-Oct-2018 13:24:38	20-Oct-2018 13:24:38	00:00:00	Red			
Allen Bradley	Allen Bradley	Monitoring Sensor- H10 Humidity High	A3	20-Oct-2018 13:22:34	20-Oct-2018 13:22:34	00:00:00	Red			

SOFTWARE HOME SCREEN



LIVE CHART

AllySoft 2

Door Open

Event Acknowledge

Change Over Mode

Auto Tune

Safety Setting

Data Logging Frequency

Set Value with Alarm Limit

Equipment Configuration

Utility High Temperature

Person Trapped

Controlling Temp. Higher Cut off (C-H-C2)

Controlling Temp. Lower Cut off (C-L-C2)

Controlling Humidity Higher Cut off (RH-H-C2)

Regular Steam Generator

Standby Steam Generator

Regular DHR MCB Trip

Temp. Not Maintained By Regular Comp.

Stability S.G. MCB Trip

S. DHR MCB Trip

By Regular Comp.

By Standby Unit

Reason: Breakdown Maintenance

Remarks: For verification

User: *****

Password: *****

Finger Print data not found

Confirm

EQUIPMENT OPERATIONS SCREEN - EVENT ACKNOWLEDGEMENT

AllySoft 2

Door Open

Event Acknowledge

Change Over Mode

Auto Tune

Safety Setting

Data Logging Frequency

Set Value with Alarm Limit

Equipment Configuration

Controlling Temperature Set Value: 25

Controlling Humidity Set Value: 40

Controlling Temperature High Limit: 27

Controlling Humidity High Limit: 45

Controlling Temperature Low Limit: 23

Controlling Humidity Low Limit: 35

Differential Pressure Set Value: 15

Differential Pressure High Limit: 20

Differential Pressure Low Limit: 10

New Value: 25

Reason: Breakdown Maintenance

Remarks: Check Alarm

User: *****

Password: *****

Finger Print data not found

Confirm

PARAMETER SETTINGS

AllySoft Inte-GRO 2.0

Controlling & Monitoring Parameter Report

Temp. Setpoint	Temp. Setpoint	Temp. Setpoint	Temp. Setpoint	Temp. Setpoint	Temp. Setpoint	Temp. Setpoint	Temp. Setpoint	Temp. Setpoint	Temp. Setpoint	Temp. Setpoint
27	27	27	27	27	27	27	27	27	27	27
23-Nov-18 11:30	23-Nov-18 11:30	23-Nov-18 11:30	23-Nov-18 11:30	23-Nov-18 11:30	23-Nov-18 11:30	23-Nov-18 11:30	23-Nov-18 11:30	23-Nov-18 11:30	23-Nov-18 11:30	23-Nov-18 11:30
23-Nov-18 11:32	23-Nov-18 11:32	23-Nov-18 11:32	23-Nov-18 11:32	23-Nov-18 11:32	23-Nov-18 11:32	23-Nov-18 11:32	23-Nov-18 11:32	23-Nov-18 11:32	23-Nov-18 11:32	23-Nov-18 11:32

Verify's Comment : Daily Data verification

Created By : Nagar 22-Nov-18 11:43

Checked By : Nagar 22-Nov-18 11:43

Verified By : superAllyOne 22-Nov-18 11:43

CONTROLLING & MONITORING SENSOR REPORT

AllySoft Inte-GRO 2.0

Alarm Without Peak Value

Description	Age	Start Date & Time	End Date & Time	Duration	Acknowledged By User	Acknowledged Date & Time	Remarks
Monitoring Sensor- T2 Temp. High	A3	22-Nov-18 10:00	22-Nov-18 10:01	1 Min 22 Secs			
Controlling Temp. Low	A3	22-Nov-18 10:02	22-Nov-18 10:08	6 Min 14 Secs	Nagar	22-Nov-18 10:09	Testing
Monitoring Sensor- T1 Temp. Low	A3	22-Nov-18 10:02	22-Nov-18 10:08	6 Min 14 Secs			
Monitoring Sensor- T2 Temp. Low	A3	22-Nov-18 10:02	22-Nov-18 10:08	6 Min 14 Secs			
Monitoring Sensor- T3 Temp. Low	A3	22-Nov-18 10:02	22-Nov-18 10:08	6 Min 14 Secs			
Monitoring Sensor- T4 Temp. Low	A3	22-Nov-18 10:02	22-Nov-18 10:08	6 Min 14 Secs			
Monitoring Sensor- T5 Temp. Low	A3	22-Nov-18 10:02	22-Nov-18 10:08	6 Min 14 Secs			
Monitoring Sensor- T6 Temp. Low	A3	22-Nov-18 10:02	22-Nov-18 10:08	6 Min 14 Secs			
Monitoring Sensor- T7 Temp. Low	A3	22-Nov-18 10:02	22-Nov-18 10:08	6 Min 14 Secs			
Monitoring Sensor- T8 Temp. Low	A3	22-Nov-18 10:02	22-Nov-18 10:08	6 Min 14 Secs			
Monitoring Sensor- H1 Humidity High	A3	22-Nov-18 10:02	22-Nov-18 10:09	6 Min 8 Secs			
Monitoring Sensor- H2 Humidity High	A3	22-Nov-18 10:02	22-Nov-18 10:09	6 Min 8 Secs			

Verify's Comment : Daily Data verification

Created By : Nagar 22-Nov-18 10:43

Checked By : Nagar 22-Nov-18 10:43

Verified By : superAllyOne 22-Nov-18 11:48

ALARM REPORT



ALARM TREND REPORT

AllySoft Inte-GRO 2.0

Event Report

Date & Time	Event	Event Date & Time	Acknowledged By User	Acknowledged Date & Time	Remarks
22-Nov-18 09:53	Power Failure	22-Nov-18 09:53			
22-Nov-18 09:59	Event Operation	22-Nov-18 09:59			
22-Nov-18 09:59	Print Frequency Changed	22-Nov-18 09:59			
22-Nov-18 10:00	Set Value Changed	22-Nov-18 10:00			
22-Nov-18 10:01	Person Trapped	22-Nov-18 10:01			
22-Nov-18 10:02	Emergency	22-Nov-18 10:02			
22-Nov-18 10:11	Set Value Changed	22-Nov-18 10:11	Nagar	22-Nov-18 10:10	Testing
22-Nov-18 10:15	Set Value Changed	22-Nov-18 10:15	Nagar	22-Nov-18 10:16	Testing
22-Nov-18 10:18	Set Value Changed	22-Nov-18 10:18	Nagar	22-Nov-18 10:18	Testing
22-Nov-18 10:20	Print Frequency Changed	22-Nov-18 10:20	Nagar	22-Nov-18 10:20	Testing
22-Nov-18 10:21	Event Operation	22-Nov-18 10:21	Nagar	22-Nov-18 10:21	Testing
22-Nov-18 10:21	Utility High Temperature	22-Nov-18 10:21			
22-Nov-18 10:21	Controlling Humidity Higher Cut off (RH-H-C2)	22-Nov-18 10:21			
22-Nov-18 10:51	Controlling Humidity Higher Cut off (RH-H-C2)	22-Nov-18 10:51			
22-Nov-18 10:52	Controlling Humidity Higher Cut off (RH-H-C2)	22-Nov-18 10:52			
22-Nov-18 11:05	Controlling Humidity High Cut off (RH-H-C1)	22-Nov-18 11:05	Nagar	22-Nov-18 10:54	Testing
22-Nov-18 11:07	Controlling Humidity High Cut off (RH-H-C1)	22-Nov-18 11:07			
22-Nov-18 11:08	Controlling Humidity High Cut off (RH-H-C1)	22-Nov-18 11:08			

Verify's Comment : Daily Data verification

Created By : Nagar 22-Nov-18 10:54

Checked By : Nagar 22-Nov-18 10:55

Verified By : superAllyOne 22-Nov-18 11:48

EVENT REPORT

AllySoft Inte-GRO 2.0

System Audit Trail

User ID	Equipment ID	Access Status	Operation	Access	Date & Time	Client IP	Port	Remarks
Nagar	Allen Bradley	Equipment Access	Event Acknowledge	Login	22-Nov-18 10:09	-	-	Testing
Nagar	Allen Bradley	Equipment Access	Person Trapped	Person Trapped	22-Nov-18 10:01	-	-	Testing
Nagar	Allen Bradley	Equipment Access	Set Value with Alarm Limit	Controlling Temp. Set Value	22-Nov-18 10:16	40	25	Testing
Nagar	Allen Bradley	Equipment Access	Set Value with Alarm Limit	Controlling Temp. High Limit	22-Nov-18 10:17	45	30	Testing
Nagar	Allen Bradley	Equipment Access	Set Value with Alarm Limit	Controlling Temp. Low Limit	22-Nov-18 10:18	15	20	Testing
Nagar	Allen Bradley	Equipment Access	Set Value with Alarm Limit	Controlling Humidity Set Value	22-Nov-18 10:18	20	60	Testing
Nagar	Allen Bradley	Equipment Access	Set Value with Alarm Limit	Controlling Humidity High Limit	22-Nov-18 10:19	55	65	Testing
Nagar	Allen Bradley	Equipment Access	Set Value with Alarm Limit	Controlling Humidity Low Limit	22-Nov-18 10:19	15	55	Testing
Nagar	Allen Bradley	Equipment Access	Data Logging Frequency	Calibration/Validation	22-Nov-18 10:20	30	1	Testing
Nagar	-	-	-	Logout	22-Nov-18 10:21	-	-	-
superAllyOne	-	-	-	Login	22-Nov-18 10:21	-	-	-
superAllyOne	Allen Bradley	Equipment Access	Door Open	Calibration/Validation	22-Nov-18 10:21	-	-	Testing
superAllyOne	-	-	-	Auto Logout	22-Nov-18 10:22	-	-	-
superAllyOne	-	-	-	Login	22-Nov-18 10:22	-	-	-

Verify's Comment : Daily Data Verification

Created By : Nagar 22-Nov-18 11:13

Checked By : Nagar 22-Nov-18 11:14

Verified By : superAllyOne 22-Nov-18 11:16

AUDIT TRAIL REPORT

AllySoft Inte-GRO 2.0

MKRH Daily

Plot No -B-239,MIDC Malegaon, Sinnar, Nashik, Pin-422113.

Equipment Id & Name: Stability Chamber - Stability Chamber

Selected Period: 04-Dec-20 00:00 to 04-Dec-20 23:59

Date & Time Format: dd-MMM-yy HH:mm

Template Version: 2.0

Report Generation Date & Time: 09-Mar-21 11:27

Page: 1 of 1

From Date & Time	To Date & Time	Min. RH	Max. RH	Avg. RH	Remarks
04-Dec-20 00:00	04-Dec-20 23:59	56.6	60.5	60.0	

Mean Kinetic Relative Humidity :60 %

MKRH DAILY REPORT

AllySoft Inte-GRO 2.0

MKT Daily

Plot No -B-239,MIDC Malegaon, Sinnar, Nashik, Pin-422113.

Equipment Id & Name: 069/20-21 - WALK IN COLD CHAMBER

Selected Period: 19-Dec-20 00:00 to 19-Dec-20 23:59

Date & Time Format: dd-MMM-yy HH:mm

Template Version: 2.0

Report Generation Date & Time: 23-Dec-20 15:25

Page: 1 of 1

From Date & Time	To Date & Time	Min. Temp.	Max. Temp.	Avg. Temp.	Remarks
19-Dec-20 00:00	19-Dec-20 23:59	4.5	6.9	5.0	

Mean Kinetic Temperature :5 °C

MKT DAILY REPORT

DOCUMENTATION & PROFESSIONAL SERVICES

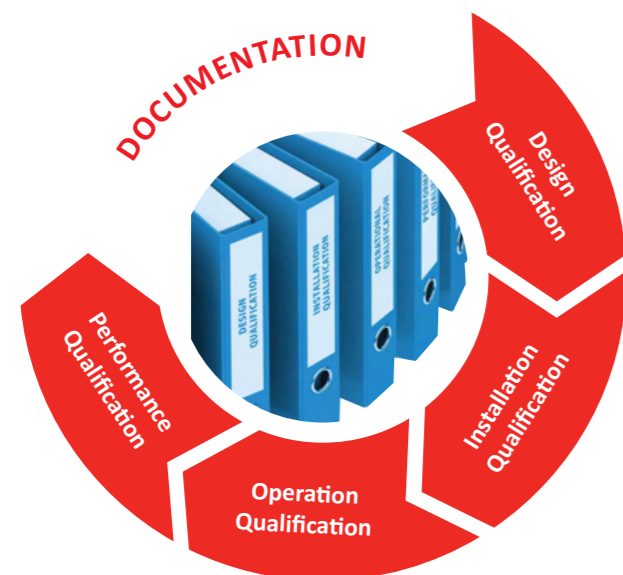
Complete Qualification and Validation documentation are provided with full compliance of requirements as laid down by CGMP norms and ISPE recommendations. These include :

Equipment

- DQ - Design Qualification with GA drawings & MOC/ test certificates
- IQ - Installation Qualification
- OQ - Operational Qualification with PLC Validation
- PQ - Performance Qualification

Software

- IQ - Installation Qualification
- OQ - Operational Qualification



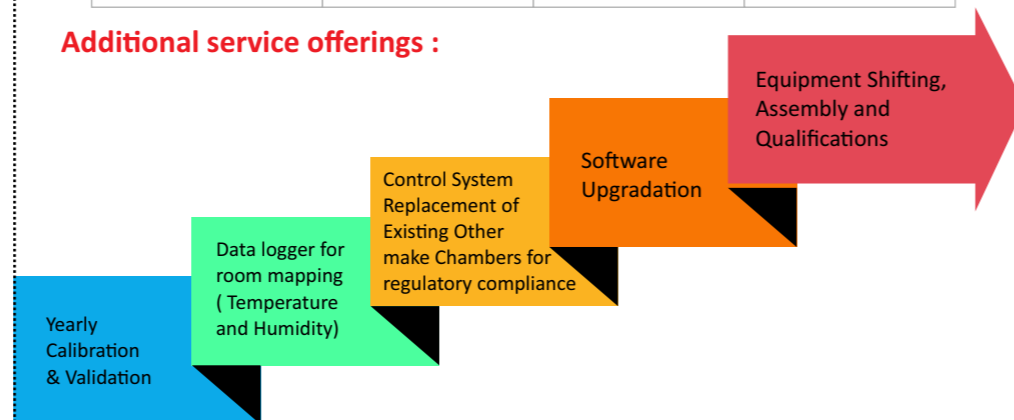
Serving our esteemed customers has been our foremost aim in the ongoing quest in achieving professional excellence. And a strong service force enables us to achieve our periodic goals in this journey. Our service team is as strong as our manufacturing staff. Their skills are regularly updated and reviewed for constant improvement opportunities, resulting in minimal response time and accurate diagnosis with regards to the nature of any service call and the best service offerings our customers can opt for.

Our Professional services Include the following:-

Annual Maintenance Contracts (AMC) - Comprehensive, Semi Comprehensive, Non Comprehensive

Particulars	Comprehensive	Semi Comprehensive	Non Comprehensive
4 Quarterly Service Visits	YES	YES	YES
No. of Service Call Visits	Unlimited	Unlimited	Unlimited
Response time for Critical Service Calls	Within 24 hours	Within 24 hours	Within 24 hours
Repairing During Preventive Maintenance Visit	Yes (Including Critical and Consumable Replacement Spares)	Yes (Including Consumable Replacement Spares)	Yes (Replacement Spares if used on chargeable basis)
Equipment Cleaning as per Checklist	YES	YES	YES
Yearly Calibration & Validation	YES	YES	YES

Additional service offerings :



OUR GROWTH CONTRIBUTORS



And many more...